


1

260m<sup>3</sup>

" - "

(GB18597-2001,2013 )

GB18597-2001

2013

1

10<sup>-7</sup>cm/s

2

2

10<sup>-10</sup>cm/s

GB15562.2

591

5



4-16      4-17

	1
	2
	1

3

4

7

5

260m<sup>3</sup>

”

(GB18597-2001,2013 )

GB18597-2001

6

1

2

---

3

1

2

1

3

5-1

---

1			
---	--	--	--

2

---

55m<sup>3</sup>

540 m3

20		2		
21		1		

5-3

1		
2		
3	HCl H <sub>2</sub> S	
4		
5		
6		
7		
8		

3

---

6-1

---

1

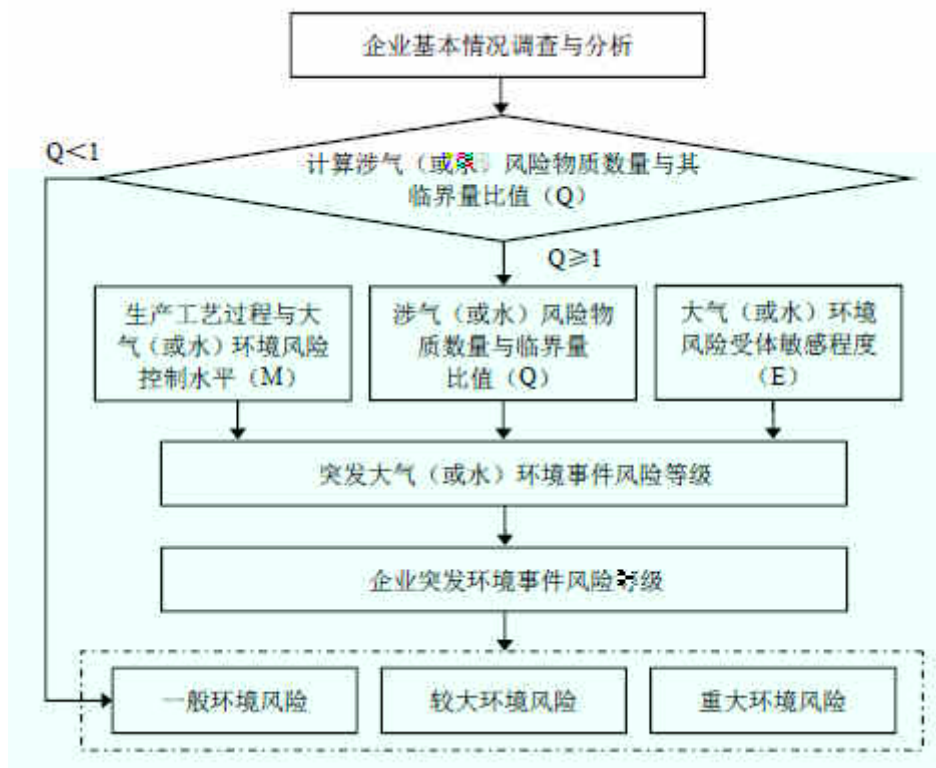
Q

M

E

Q 1

7-1



3

A

Q

0.559

Q0

Q

2.767

Q1

M

3.4

3.5 M

30 M2

M 39

M2

HJ941-2018

1 2 3 E1

E2 E3 3.2.8

E1 E3

HJ941-2018

7-1

E	Q	M			
		M1	M2	M3	M4
1 E1	1 Q<10 Q1				
	10 Q<100 Q2				
	Q 100 Q3				
2 E2	1 Q<10 Q1				
	10 Q<100 Q2				
	Q 100 Q3				
3 E3	1 Q<10 Q1				
	10 Q<100 Q2				
	Q 100 Q3				

E 1 E3

M M2 Q 1

HJ941-2018

" - Q0 " E 3 E3

M M2 Q

2.767 Q1 HJ941-2018

" - Q1-M2-E3 "

" [ - Q0 + - Q1-M2-E3 ]"

---

“ [ - Q0 + - Q1-M2-E3 ]”

		<p>0.0349mg/m3    0.5812mg/m3  349.2%    290.6%</p>	
4	<p>1</p> <p>SO2                      50%  0.03893mg/m3  7.79%</p> <p>SO2  0.07886mg/m3                      15.78%</p> <p>2</p> <p>PM10  0.4942mg/m3  109.82%</p> <p>TEQ/m3                                      0.2749pg  5.6%</p>		5
5			
6	<p>10min</p> <p>30min</p> <p>LC50                      IDLH  18.1m  91.6m  300m</p>	<p>SNCR                      20m</p>	
7			<p>1</p> <p>2</p>

--	--	--

1

2

3

HCl H<sub>2</sub>S

---

1

2

3

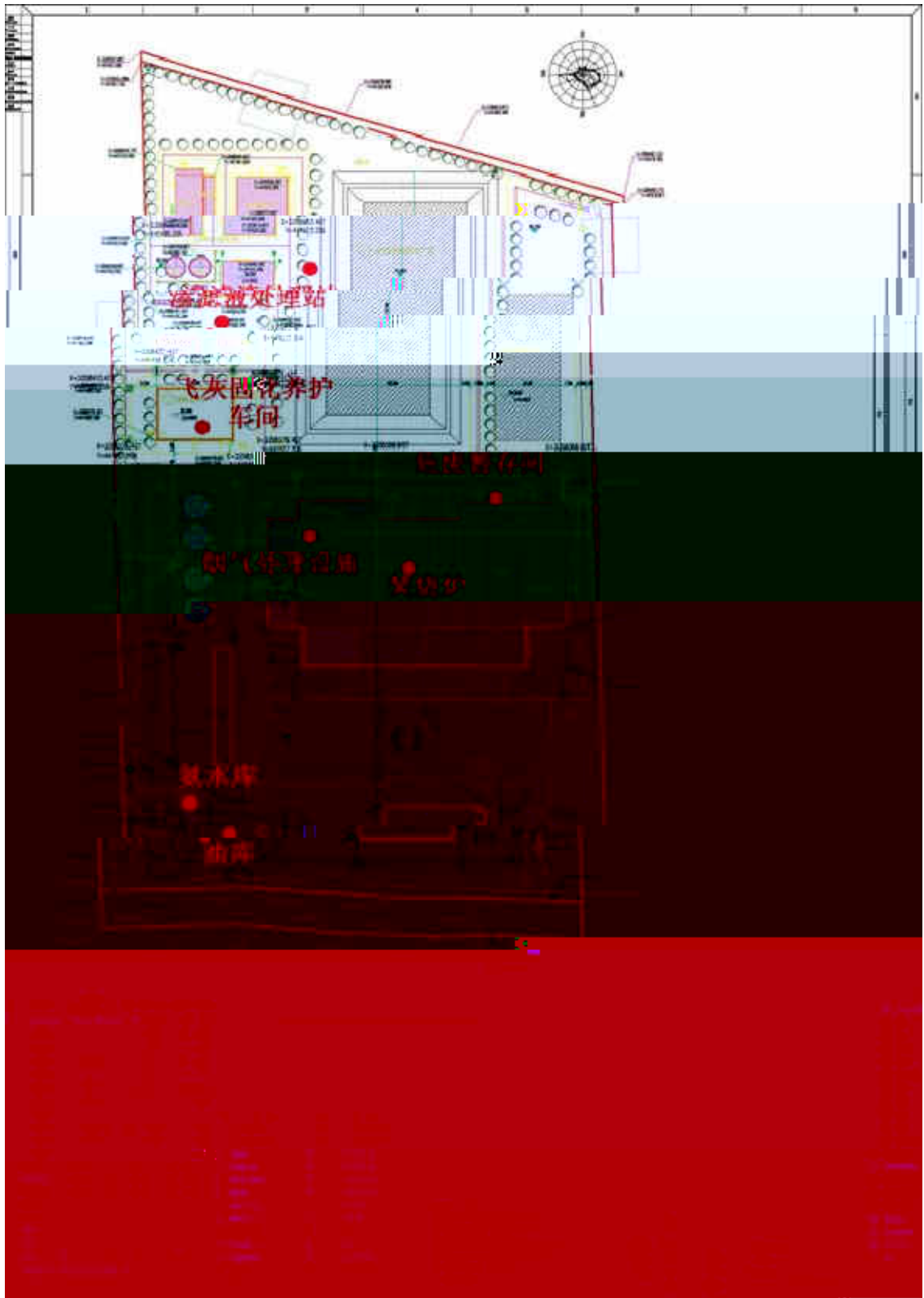
4

5

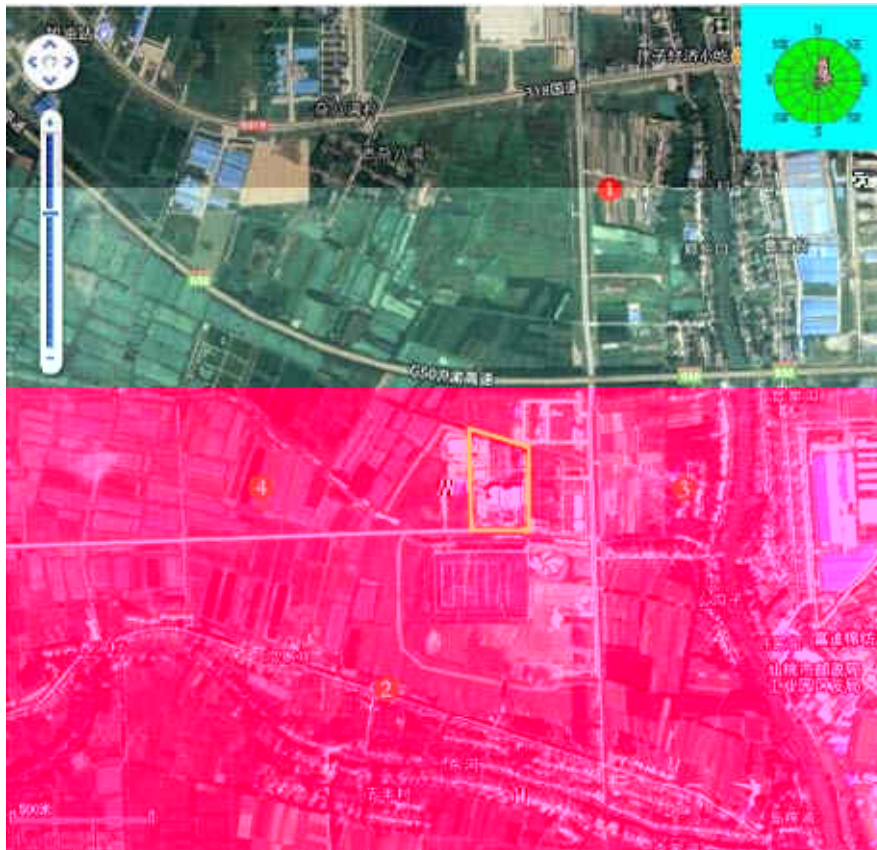
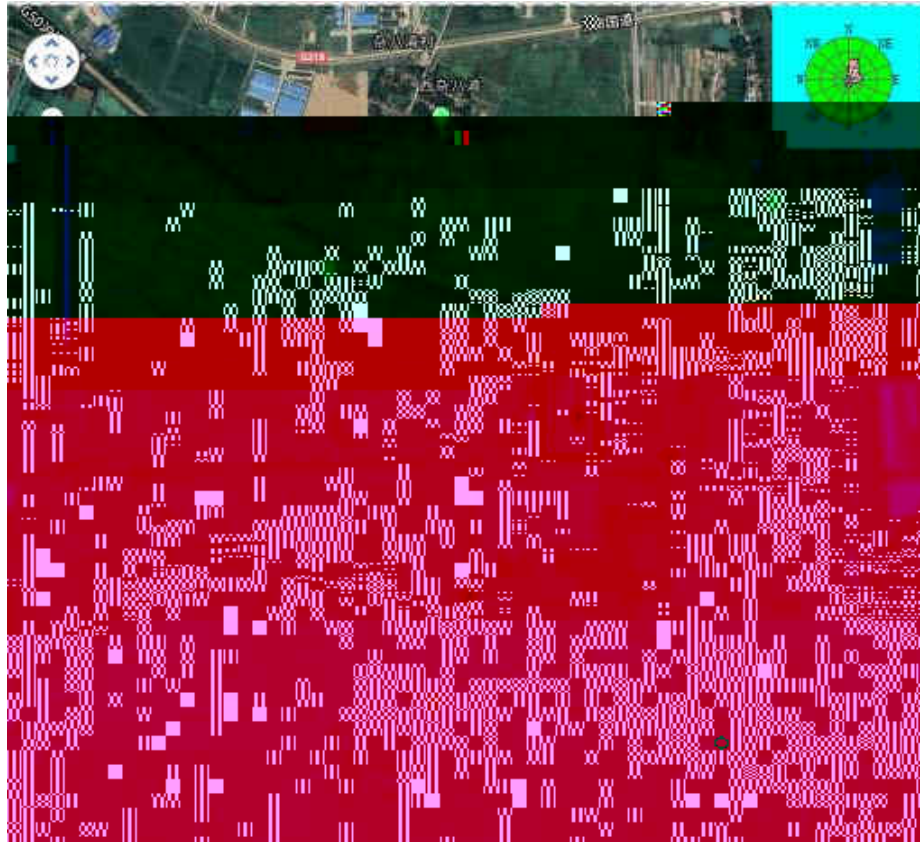
6

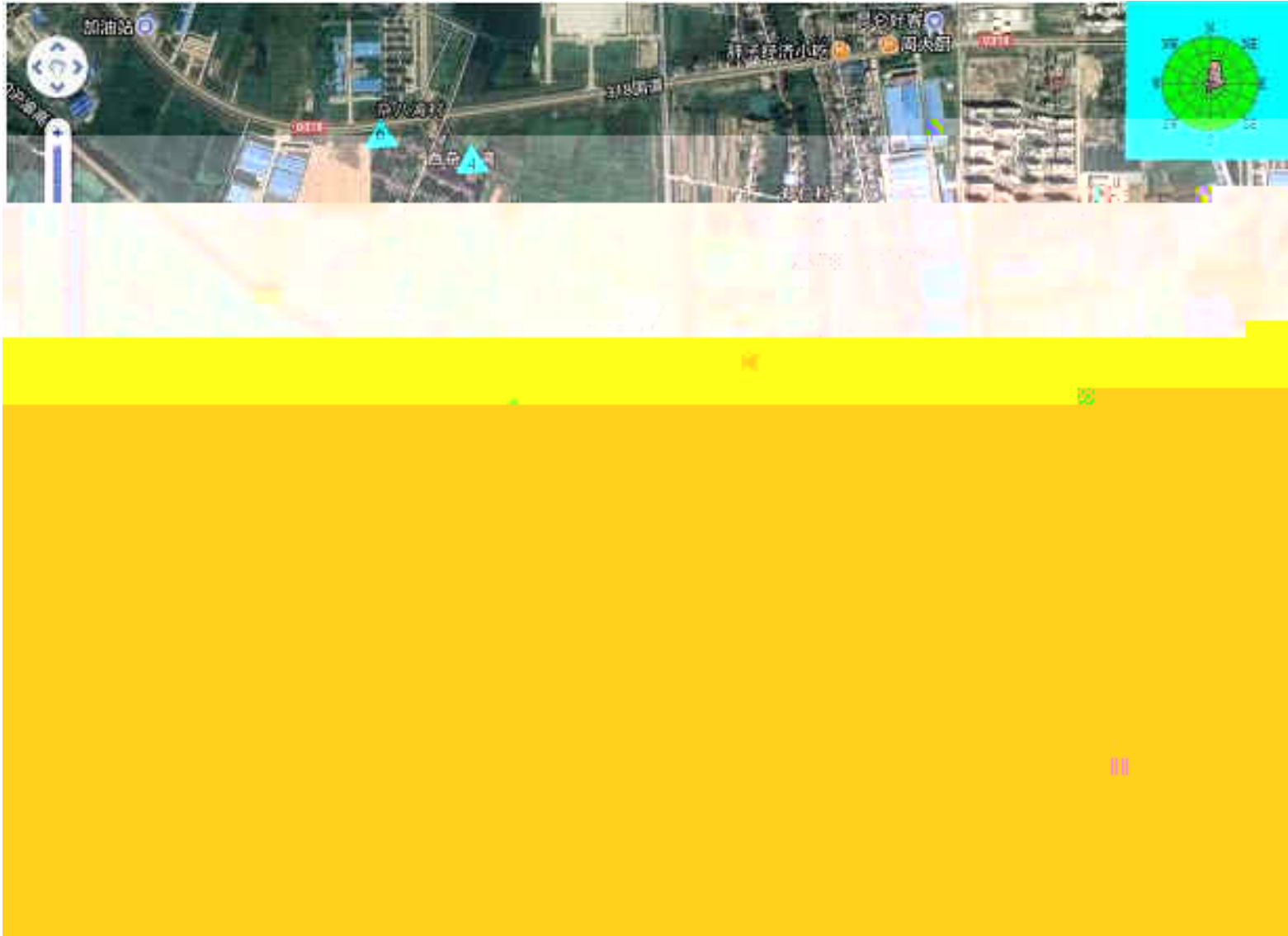






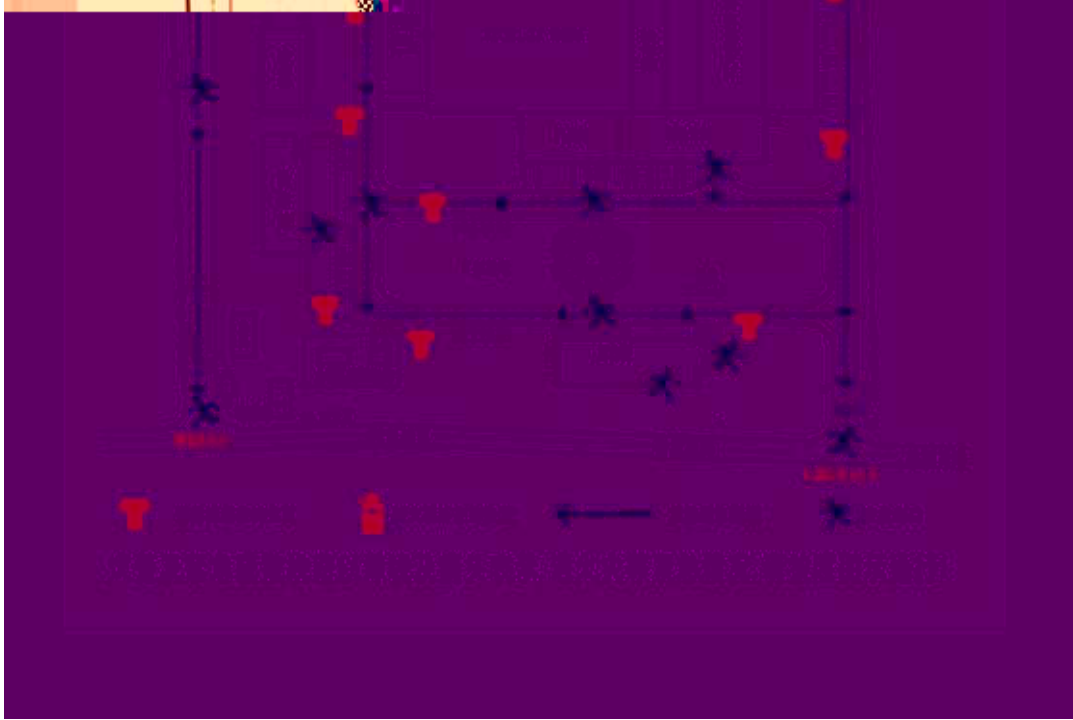
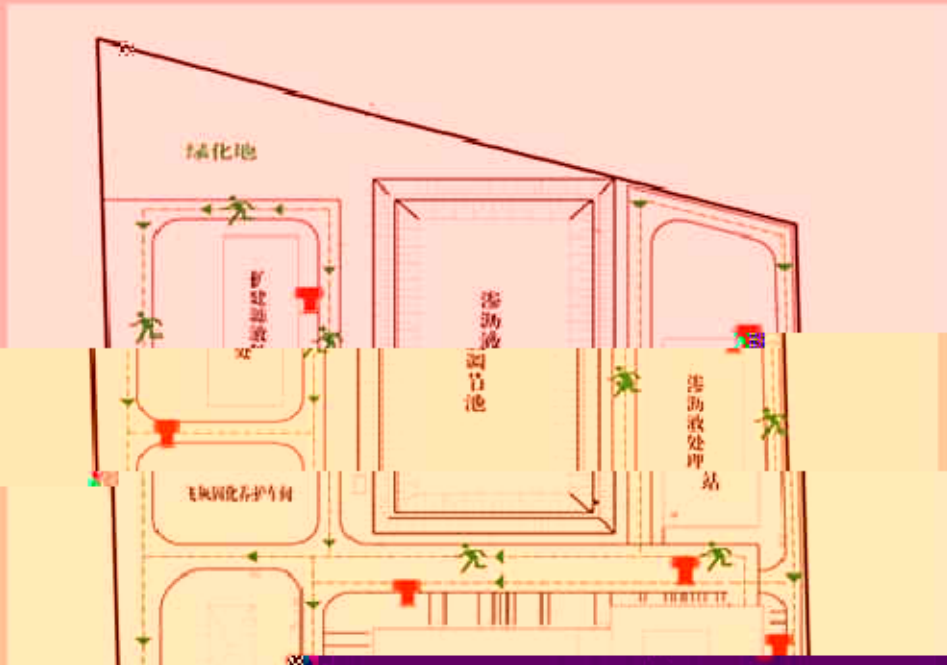


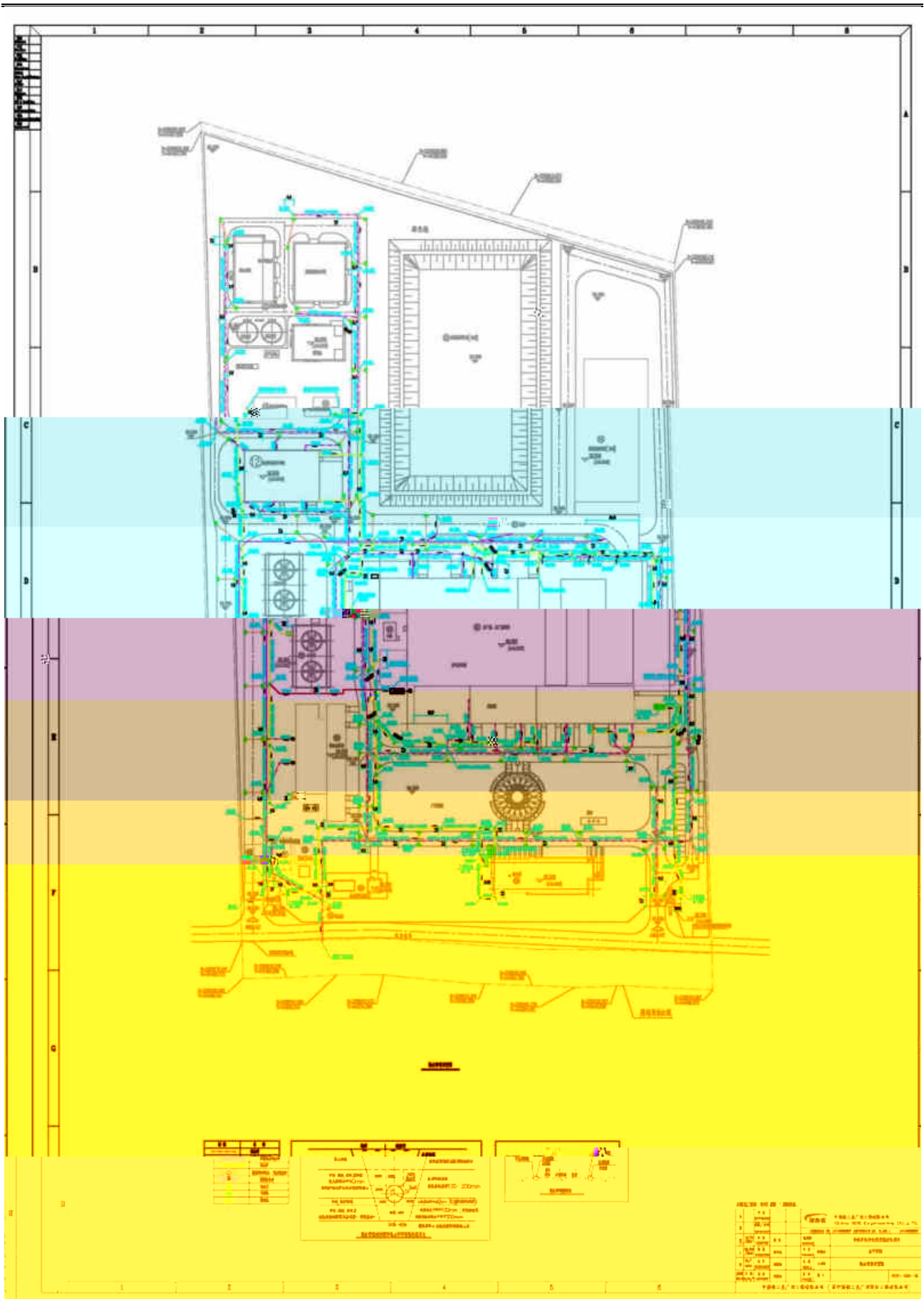




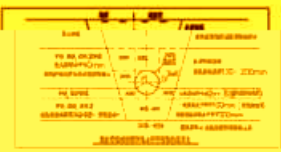


# 厂区应急疏散示意图





СВ	СВ	СВ
1	2	3
4	5	6
7	8	9
10	11	12



№	СВ	СВ	СВ	СВ	СВ	СВ	СВ
1	2	3	4	5	6	7	8
9	10	11	12	13	14	15	16
17	18	19	20	21	22	23	24
25	26	27	28	29	30	31	32
33	34	35	36	37	38	39	40
41	42	43	44	45	46	47	48
49	50	51	52	53	54	55	56
57	58	59	60	61	62	63	64
65	66	67	68	69	70	71	72
73	74	75	76	77	78	79	80
81	82	83	84	85	86	87	88
89	90	91	92	93	94	95	96
97	98	99	100	101	102	103	104
105	106	107	108	109	110	111	112
113	114	115	116	117	118	119	120
121	122	123	124	125	126	127	128
129	130	131	132	133	134	135	136
137	138	139	140	141	142	143	144
145	146	147	148	149	150	151	152
153	154	155	156	157	158	159	160
161	162	163	164	165	166	167	168
169	170	171	172	173	174	175	176
177	178	179	180	181	182	183	184
185	186	187	188	189	190	191	192
193	194	195	196	197	198	199	200



0. )å<sup>1</sup> Á , Ê [ C\$AB9 Û €

[2019<sup>a</sup> (~)]

y 558" R i )å +k?L†ç .

Lz 4 5 Ê [ +A™Ú/ñ D%ö 4

Lz 4 5 Ê [ +A™Ú/ñ D%ö 4

Lz 4 6 , »"—j M"j I LüÈ t 1x5‡ M"j L ÈD%õ/p E 4

Lz 4 6 , »"—j M"j I LüÈ t 1×5‡ M"j L ÈD%ô/p E 4



Lz 4 4-1 ] "J- #•&i f— > { Â w9'

Lz 4 4-2 ] "J- #•&i f—> { Â w9'

0. )å<sup>1</sup> Á, Ê [ C\$AB9 Û €

[2019<sup>a</sup> (~)]

y 558" R i )å +k?L†ç .

0. )å<sup>1</sup> Á, Ê [ C\$AB9 Û €

[2019<sup>a</sup> (~)]

y 558" R i )å +k?L†ç .

0. )å<sup>1</sup> Á, Ê [ C\$AB9 Û €

[2019<sup>a</sup> (~)]

y 558" R i )å +k?L†ç .

s 2+Gk<sup>3</sup> n'J' +e<sup>2</sup> N© 0± )β<sup>3</sup> » &NpL<sup>T</sup>Aô` Öz

---

Lz4 4-3 & = f A"j Â U - #•&i f > { Â w9'

s 2+Gk<sup>3</sup> n'J' +e<sup>2</sup> N© 0± )β<sup>3</sup> » &NpL<sup>T</sup>Aô` Öz

---

Lz4 4-3 & = f A"j Â U - #•&i f > { Â w9'

Lz 4 5 Ê [ +A™Ú/ñD%ö 4

Lz 4 5 Ê [ +A™Ú/ñ D%ö 4

Lz 4 6 , »"—j M"j I LüÈ t 1×5‡ M"j L ÈD%ô/p E 4

Lz 4 6 , »"—j M"j I LüÈ t 1×5‡ M"j L ÈD%ô/p E 4



0. )å<sup>1</sup> Á , Ê [ C\$AB9 Û €

[2019<sup>a</sup> (~)]

y 558" R i )å +k?L†ç .

0. )å<sup>1</sup> Á , Ê [ C\$AB9 Û €

[2019<sup>a</sup> (~)]

y 558" R i )å +k?L†ç .